

# **Fire and Climate Change Outreach and Education**

Laurel Kays, NC State Extension Forestry  
and Southern Fire Exchange

# Where Can I Learn More?

- NCSU Extension Forestry
- NC Climate Office



# Where Can I Learn More?

- Southern Fire Exchange
- Consortium of Appalachian Fire Managers and Scientists
- Joint Fire Science Program

**SFE WEBINAR:**

**OVERVIEW OF THE NORTH CAROLINA CLIMATE SCIENCE REPORT: IMPLICATIONS FOR WILDLAND FIRE**

MAY 27TH 1:00 - 2:00 PM ET



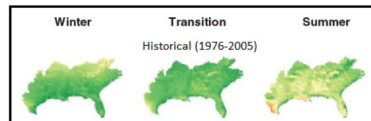
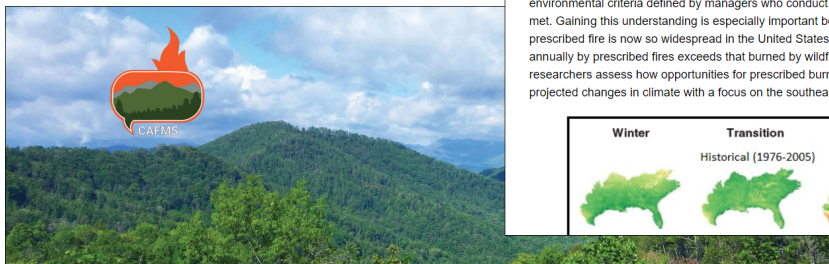
## Research Brief

### Climate Change Projected to Reduce Prescribed Burning Opportunities in the South-eastern United States

Authors: John A. Kupfer, Adam J. Terando, Peng Gao, Casey Teske and J. Kevin Hiers

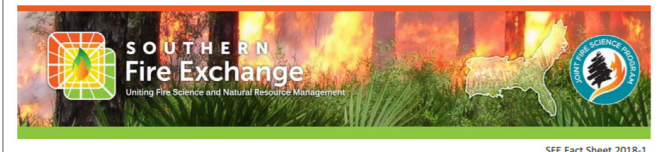
#### Introduction

Prescribed fire is a critical tool for managing wildfire risks and meeting ecological objectives, but its safe and effective application requires that specific meteorological criteria (i.e. a "burn window") are met. Given climate change projections and projected changes in key environmental factors that constrain prescribed burning, it is clear that predicting the future of fire will require a better understanding of whether environmental criteria defined by managers who conduct prescribed fires can still be met. Gaining this understanding is especially important because the use of prescribed fire is now so widespread in the United States that the total area burned annually by prescribed fires exceeds that burned by wildfires. In this article, researchers assess how opportunities for prescribed burning would be influenced by projected changes in climate with a focus on the southeastern U.S.

**Consortium of Appalachian Fire Managers & Scientists**

ABOUT RESOURCES COMMUNITY CALENDAR



**SOUTHERN Fire Exchange**  
Uniting Fire Science and Natural Resource Management

SFE Fact Sheet 2018-1

## Relationships Among Wildfire, Prescribed Fire and Drought at Fort Benning, Georgia

Leslie Boby, Jennifer Fawcett, Alan Long

### INTRODUCTION

Prescribed fire is an important tool for meeting multiple management objectives such as reducing fuels and improving wildlife habitat. Most natural resource and fire managers believe that the risks of wildfire are often reduced by recent fires, and a growing body of research has shown this to be the case. A recent Southern Fire Exchange Fact Sheet *What the research says: Prescribed fire and wildfire risk reduction* summarized several studies over the last 50 years that contributed to our understanding of the role of previous fires in mitigating wildfires in the South. An important conclusion was that wildfire risk reduction may only last a few years depending on the ecosystems involved. This fact sheet provides a more in-depth review of one of those studies, which was a long-term landscape scale evaluation of interactions between prescribed fire and wildfire at Fort Benning Army Base in west central Georgia. The study reported by Addington, et

### STUDY SITE

#### Fort Benning, GA

- 182,000 acre U.S Army military base
- 145,000 acres of forested land
- 90,000 acres of upland pine subject to fire management
- Frequent unintended ignitions from infantry training exercises

#### Vegetation:

- Pine-dominated uplands, hardwood-dominated lower slopes and bottomlands.
- Historically, this area would have been longleaf pine and mixed-pine forests.

# Where Can I Learn More?

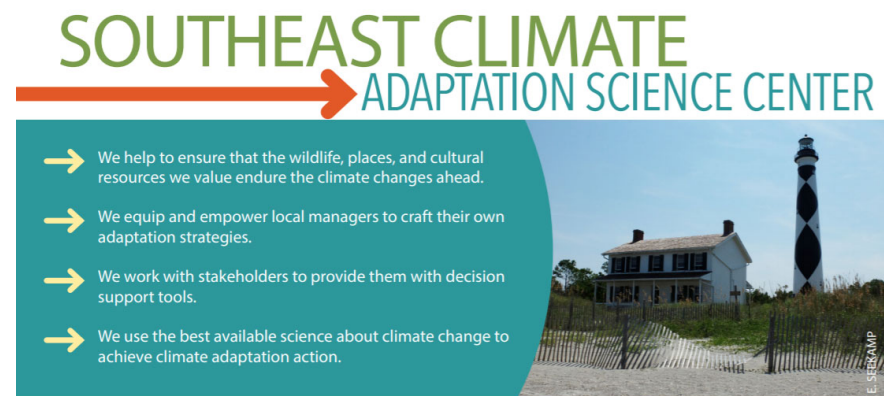
- Southeast Climate Adaptation Science Center (SECASC)

## Global Change Seminar Summary – Fire: Connecting Science, Management, and Policy

February 23, 2020

*This post was written by 2019-20 Global Change Fellow, Kate Jones, summarizing the first seminar in the spring Global Change Seminar series, Fire: Connecting Science, Management, and Policy, on February 6, 2020. The discussion was also moderated by Kate Jones.*

View a [recording](#) of the presentations.



## Other Topics

- Wildland fire and climate change is closely connected to other important issues including:
  - Development patterns
  - Structure building
  - Sea level rise
  - Budgets and capacity

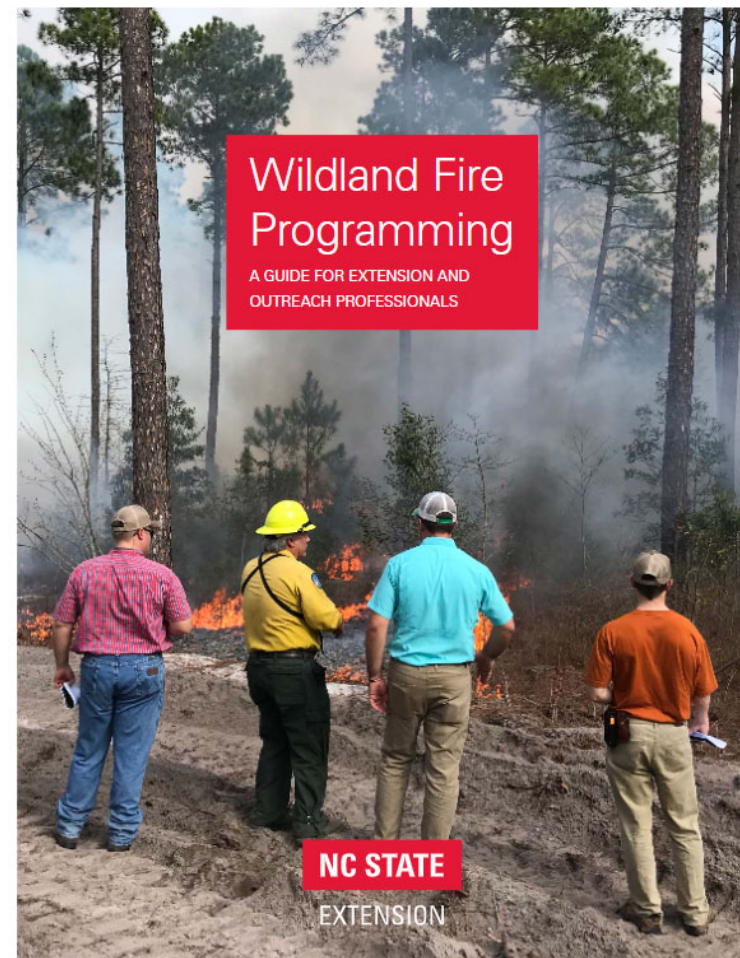
# How Do I Communicate With the Public?

- What issues are your constituents facing?
- Know your basics
- Pull in fire professionals
- Get ready for the future, including big picture questions
  - What does it look to mitigate impacts, not just adapt?
  - What resources or policies do we need?



# How Do I Communicate With the Public?

- Program options in addition to “typical” programs
  - Learn and burns
  - Fire festivals or education days
  - Photos! And good media coverage that educates about fire



## Find Partners

- People on this call
- NC Forest Service
- NC Parks
- US Forest Service
- US Fish and Wildlife Service
- The Nature Conservancy
- The Longleaf Alliance
- So many others!



**Get in touch:**  
**[lekays@ncsu.edu](mailto:lekays@ncsu.edu)**  
**919-513-2573**